



White Seabass Release-Recapture Facts

The first experimental release of more than 2,000 juvenile white seabass took place in October of 1986 in Mission Bay (San Diego, CA). Since then, the program has released over one million juvenile white seabass into embayments and near-shore coastal areas in southern California.

In October of 1995, the Leon Raymond Hubbard, Jr. Marine Fish Hatchery in Carlsbad, CA became operational. Built on land donated by the San Diego Gas & Electric adjacent to Agua Hedionda Lagoon, the hatchery is capable of producing more than 350,000 juvenile white seabass annually. A major portion of the capital costs for the expansion was provided by the owners of the San Onofre Nuclear Generating Station (Southern California Edison, San Diego Gas & Electric, and the cities of Anaheim and Riverside) as part of a mitigation requirement. Contributions were also made by private, corporate, and foundation donors.

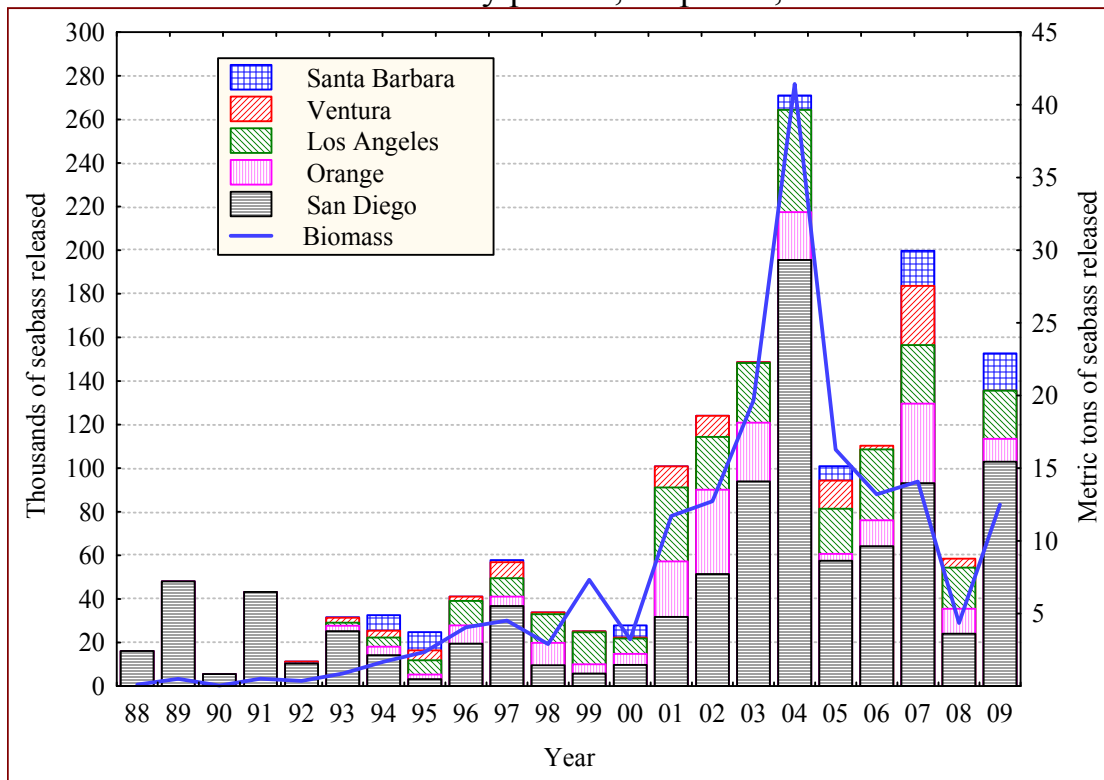


Figure 1. Number of hatchery-reared white seabass released into the ocean by coastal county in southern California since 1988.



Since 1986 hatchery-reared white seabass have been released into the bays and nearshore coastal areas of southern California. Over 1,800 of these hatchery-reared white seabass have been recovered! Figure 2 below shows the release and recovery locations for 30 legal-sized (≥ 28 ") white seabass caught in southern California in 2009. Some of these individuals were caught as early as 3 years after their release while others were at liberty for over 11 years before they were recovered.

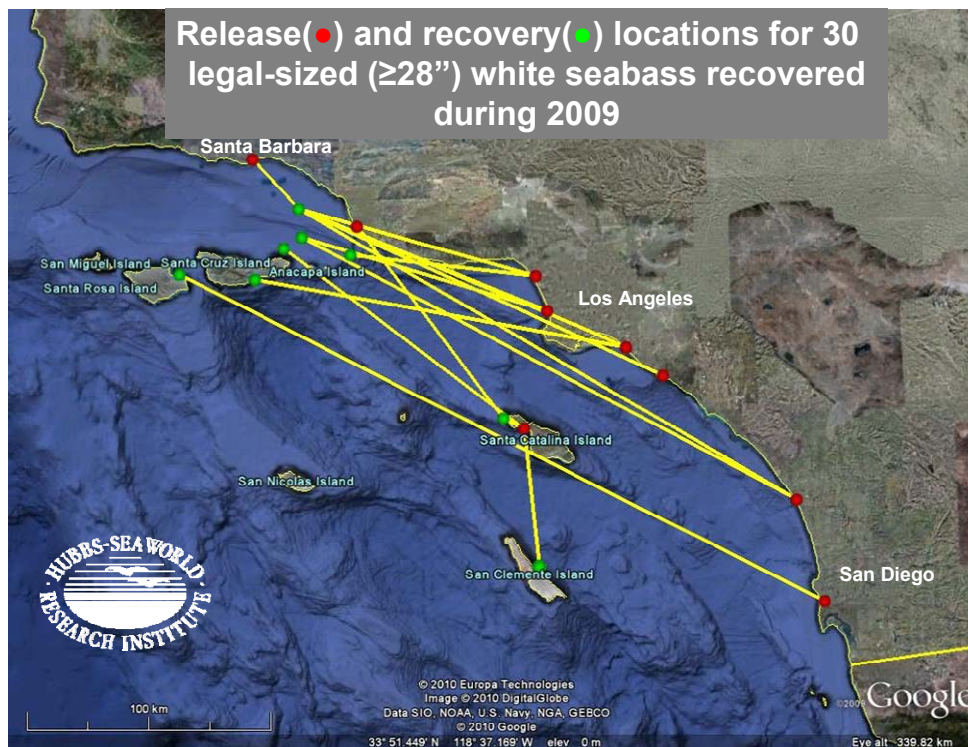


Figure 2. Release and recapture location of 30 legal-sized white seabass recovered along the southern California coast in 2009.

In general, white seabass move north and south along the coast from their release sites. While some white seabass have been caught near their site of release several years later, others have been recovered over 150 nautical miles away just 18 months after release. A few individuals have even moved from one bay to another along the coast. Hatchery-reared white seabass released at Santa Catalina Island have been recovered along the mainland within a few months.

The Ocean Resources Enhancement and Hatchery Program (OREHP) is one of the few stocking programs dedicated to assessing the biological and economic impacts of its releases, and it is the only program of its kind on the west coast of North America. Through its responsible approach and extensive, self-imposed scientific review process, OREHP has established itself as a model for stocking programs worldwide.



The Ocean Resources Enhancement and Hatchery Program (OREHP)

... Needs Your Assistance

Beginning in 1986 scientists at Hubbs-SeaWorld Research Institute started releasing cultured white seabass into coastal waters in southern California. Each fish is tagged internally in the cheek with a small, stainless steel coded wire tag (CWT). The purpose of this tag is to identify hatchery-reared fish from wild individuals. This CWT is not visible externally on the fish and can only be located by a specialized detection device. Some of the information obtained from tagged individuals includes their movement, diet, growth, and most importantly, survival rate. To date, we have received limited information, especially from legal-sized (≥ 28 ") individuals. This is where we need your help – we need white seabass heads!



Figure 3. Coded wire tag – actual size and enlarged image.

We would appreciate your help in saving and freezing heads of adult white seabass with the stones/ear bines intact. We will scan these heads for tags, and collect the appropriate age and genetic stock information. To facilitate data interpretation, heads should be bagged and labeled with your name, phone number, date and location of capture. Heads can be dropped off at one of the many freezer locations throughout southern California (see back side of this page). We will be checking and removing the heads from the freezers on a regular basis. If we do find a tagged fish, we will notify you promptly.

Thank you very much for your support of this program. For more information please contact:

Mike Shane (619) 226-3946
mshane@hswri.org



White Seabass Head Drop-off Locations with Freezers

Organization or Landing

Phone

Santa Barbara

Calif. Dept. of Fish and Game (805) 568-1221
 Sea Landing (805) 963-3564

Ventura/Oxnard

Eric's Tackle Shop (805) 648-5665
 Papa Hook's Landing (formerly Captain Hook's) (805) 382-6233
 Channel Islands Sportfishing Center (805) 985-8511

Marina Del Rey

In Seine Bait Company (310) 574-4443
 Marina Del Rey Sportfishing (310) 822-3625
 Purfields Pro Tackle (310) 397-6171

Torrance/Redondo Beach

Redondo Beach Boat Hoist (310) 374-3481

San Pedro/Long Beach

22nd Street Sportfishing (310) 832-8304
 L.A. Harbor Sportfishing (310) 547-9916
 Long Beach Sportfishing (562) 432-8993
 Pierpoint Landing (562) 983-9300
 United Anglers of So. Calif. offices (562) 494-9900

Santa Catalina Island

Avalon Seafood (at the end of the green pier) (310) 510-0197
 Two Harbors (harbor patrol office on the pier) (310) 510-4211

Los Alamitos/Huntington Beach

Calif. Dept. of Fish and Game (562) 342-7111
 Pacific Edge Bait & Tackle (714) 840-4262
 Mako Matt's Marine (714) 893-7743

Newport Beach/Irvine

Angler's Center (949) 642-6662
 Davey's Locker (949) 673-1434
 Newport Landing Sportfishing (949) 675-0550

Dana Point

Dana Wharf Sportfishing (949) 496-5794
 Hogan's Bait & Tackle (949) 493-3528
 Jig Stop Tackle & Tours (949) 496-3555

Oceanside/Carlsbad/Solana Beach

Helgren's Sportfishing (760) 722-2133
 Leon Raymond Hubbard, Jr. Hatchery (760) 434-9501
 Blue Water Tackle (858) 350-8505

San Diego

Dana Landing (Mission Bay) (619) 226-2929
 Hubbs-SeaWorld Research Institute (619) 226-3870
 Calif. Dept. of Fish and Game (858) 467-4201



UNITED ANGLERS
of Southern California



If you drop-off a white seabass head at any of these locations please include your name, phone number, date you caught the fish, and the location (latitude and longitude would be the best) where you caught the fish.